

PELLA CORPORATION

IMPERVIA 2.0 SLIDING PATIO DOOR (NON-HVHZ) (IMPACT)



102 MAIN ST.
PELLA, IA 50219
PH: (641) 621-6096

INSTALLATION NOTES:

- ONE (1) INSTALLATION ANCHOR IS REQUIRED AT EACH ANCHOR LOCATION SHOWN.
- THE NUMBER OF INSTALLATION ANCHORS DEPICTED IS THE MINIMUM NUMBER OF ANCHORS TO BE USED FOR PRODUCT INSTALLATION OF THE MAXIMUM SIZE LISTED.
- INSTALL INDIVIDUAL INSTALLATION ANCHORS WITHIN A TOLERANCE OF ±1/2 INCH THE DEPICTED LOCATION & SPACING IN THE ANCHOR LAYOUT DETAILS (I.E., WITHOUT CONSIDERATION OF TOLERANCES). TOLERANCES ARE NOT CUMULATIVE FROM ONE INSTALLATION ANCHOR TO THE NEXT.
- SHIM AS REQUIRED AT EACH INSTALLATION ANCHOR WITH LOAD BEARING SHIM(S). MAXIMUM ALLOWABLE SHIM STACK TO BE 1/4" INCH. SHIM WHERE SPACE OF 1/16 INCH OR GREATER OCCURS. SHIM(S) SHALL BE CONSTRUCTED OF HIGH DENSITY PLASTIC OR BETTER.
- FOR MASONRY OR CONCRETE OPENINGS, 1X WOOD BUCK MAY BE USED (OPTIONAL AS LONG AS THE MINIMUM EMBEDMENT AND EDGE DISTANCE REQUIREMENTS ARE STILL MET WITHIN THE CORRESPONDING HOST SUBSTRATE. SEE GENERAL NOTE #3 ON SHEET 1 FOR MORE INFORMATION.
- MINIMUM EMBEDMENT AND EDGE DISTANCE EXCLUDE WALL FINISHES, INCLUDING BUT NOT LIMITED TO STUCCO, FOAM, BRICK VENEER, AND SIDING.
- INSTALLATION ANCHORS AND ASSOCIATED HARDWARE MUST BE MADE OF CORROSION RESISTANT MATERIAL OR HAVE A CORROSION RESISTANT COATING.
- FOR HOLLOW BLOCK AND GROUT FILLED BLOCK, DO NOT INSTALL INSTALLATION ANCHORS INTO MORTAR JOINTS. EDGE DISTANCE IS MEASURED FROM FREE EDGE OF BLOCK OR EDGE OF MORTAR JOINT INTO FACE SHELL OF BLOCK.
- INSTALLATION ANCHORS SHALL BE INSTALLED IN ACCORDANCE WITH ANCHOR MANUFACTURER'S INSTALLATION INSTRUCTIONS, AND ANCHORS SHALL NOT BE USED IN SUBSTRATES WITH STRENGTHS LESS THAN THE MINIMUM STRENGTH SPECIFIED BY THE ANCHOR MANUFACTURER.

GENERAL NOTES:

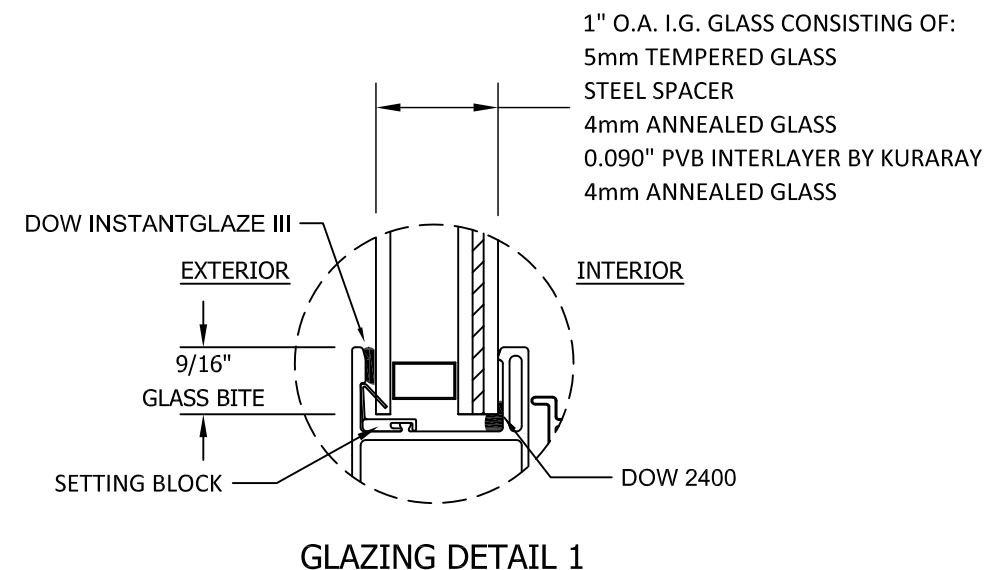
- THE PRODUCT SHOWN HEREIN IS DESIGNED AND MANUFACTURED TO COMPLY WITH THE CURRENT EDITION FLORIDA BUILDING CODE (FBC), **EXCLUDING HVHZ**, AND HAS BEEN EVALUATED ACCORDING TO THE FOLLOWING:
 - ASTM E1886-13A
 - ASTM E1996-17
 - AAMA/WDMA/CSA 101/I.S.2/A440-11/17
- ADEQUACY OF THE EXISTING STRUCTURAL CONCRETE/MASONRY, 2X FRAMING, AND METAL FRAMING AS A MAIN WIND FORCE RESISTING SYSTEM CAPABLE OF WITHSTANDING AND TRANSFERRING APPLIED PRODUCT LOADS TO THE FOUNDATION IS THE RESPONSIBILITY OF THE ENGINEER OR ARCHITECT OF RECORD FOR THE PROJECT OF INSTALLATION.
- 1X AND 2X BUCKS (WHEN USED) SHALL BE DESIGNED AND ANCHORED TO PROPERLY TRANSFER ALL LOADS TO THE STRUCTURE. BUCK DESIGN AND INSTALLATION IS THE RESPONSIBILITY OF THE ENGINEER OR ARCHITECT OF RECORD FOR THE PROJECT OF INSTALLATION.
- THE INSTALLATION DETAILS DESCRIBED HEREIN ARE GENERIC AND MAY NOT REFLECT ACTUAL CONDITIONS FOR A SPECIFIC SITE. IF SITE CONDITIONS CAUSE INSTALLATION TO DEVIATE FROM THE REQUIREMENTS DETAILED HEREIN, A LICENSED ENGINEER OR ARCHITECT SHALL PREPARE SITE SPECIFIC DOCUMENTS FOR USE WITH THIS DOCUMENT IN NON-HVHZ AREAS.
- APPROVED IMPACT PROTECTIVE SYSTEM **IS NOT REQUIRED** ON THIS PRODUCT IN WIND ZONE 2 OR LESS.
- APPROVED IMPACT PROTECTIVE SYSTEM **IS REQUIRED** ON THIS PRODUCT IN WIND ZONE 3 OR MORE.
- DOOR FRAME MATERIAL: FIBERGLASS COMPOSITE
- GLASS MEETS THE REQUIREMENTS OF ASTM E 1300 GLASS CHARTS. SEE SHEET 1 FOR GLAZING DETAIL.

GLAZING NOTES:

- GLASS TYPE COMPLIES WITH ASTM E1300 REQUIREMENTS.
- TEMPER AND SAFETY GLAZING REQUIREMENTS SHALL BE REVIEWED ON A SITE SPECIFIC BASIS.
- SETTING BLOCK DUROMETER HARDNESS OF 70-90 (SHORE A) AS REFERENCED IN FBC CHAPTER 24.
- TWO APPROVED SETTING BLOCKS SHALL BE USED FOR GLASS WIDER THAN 36" AS PER FBC CHAPTER 24.
- D.L.O. AND DESIGN PRESSURES MAY NOT EXCEED MAX VALUES IN DP TABLE ON SHEET 1, AND ELEVATIONS ON SHEET 2.

TABLE OF CONTENTS	
SHEET	SHEET DESCRIPTION
1	INSTALLATION NOTES, GENERAL NOTES, & GLAZING DETAIL
2	ELEVATIONS & CONFIGURATION TABLE
3	ANCHOR LAYOUTS
4	VERTICAL SECTIONS
5	HORIZONTAL SECTIONS
6	ANCHOR DETAILS

MAX. WINDOW FRAME SIZE		CONFIG.	DESIGN PRESSURE	GLASS TYPE	MISSILE IMPACT RATING
WIDTH	HEIGHT				
95.25"	95.5"	XO	+50/-50 PSF	G1	MISSILE LEVEL C
145.88"	95.5"	XO-O	+50/-50 PSF	G1	MISSILE LEVEL C
50.63"	95.5"	O	+50/-50 PSF	G1	MISSILE LEVEL C

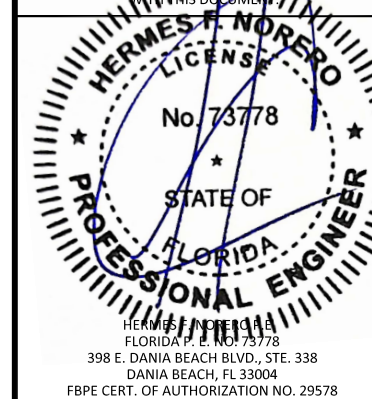


TITLE:
IMPERVIA 2.0 SLIDING PATIO DOOR
(NON-HVHZ) (IMPACT)
INSTALLATION NOTES, GENERAL NOTES, &
GLAZING DETAIL

PREPARED BY:
BUILDING DROPS, INC.
398 E. DANIA BEACH BLVD., STE. 338
DANIA BEACH, FL 33004
PH: (954)399-8478
FAX: (954)744-4738
WEB: www.buildingdrops.com

REMARKS	BY	DATE

THE INSTALLATION DETAILS DESCRIBED HEREIN ARE GENERIC AND MAY NOT REFLECT ACTUAL CONDITIONS FOR A SPECIFIC SITE. IF SITE CONDITIONS CAUSE INSTALLATION TO DEVIATE FROM THE REQUIREMENTS DETAILED HEREIN, A LICENSED ENGINEER OR ARCHITECT SHALL PREPARE SITE SPECIFIC DOCUMENTS FOR USE WITH THIS DOCUMENT.



FL39352

DATE: 06/30/23

DWG. BY: OL
CHK. BY: HFN

SCALE: NTS

DWG. #: PLA005

SHEET: 1 OF 6

1



102 MAIN ST.
PELLA, IA 50219
PH: (641) 621-6096

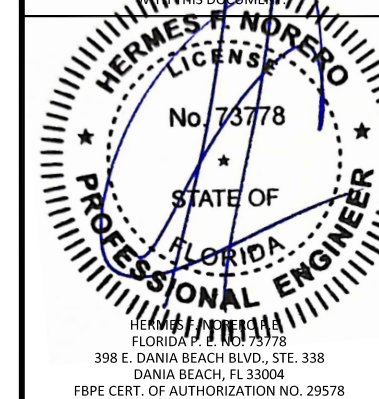
TITLE: IMPERVIA 2.0 SLIDING PATIO DOOR (NON-HVHZ) (IMPACT)
ELEVATIONS & CONFIGURATION TABLE

PREPARED BY: BUILDING DROPS, INC.
398 E. DANIA BEACH BLVD., STE. 338
DANIA BEACH, FL 33004
PH: (954) 399-8478
FAX: (954) 744-4738
WEB: www.buildingdrops.com



REMARKS	BY	DATE

THE INSTALLATION DETAILS DESCRIBED HEREIN ARE GENERIC AND MAY NOT REFLECT ACTUAL CONDITIONS FOR A SPECIFIC SITE. IF SITE CONDITIONS CAUSE INSTALLATION TO DEVIATE FROM THE REQUIREMENTS DETAILED HEREIN, A LICENSED ENGINEER OR ARCHITECT SHALL PREPARE SITE SPECIFIC DOCUMENTS FOR USE IN THIS DOCUMENT.



FL39352

DATE: 06/30/23

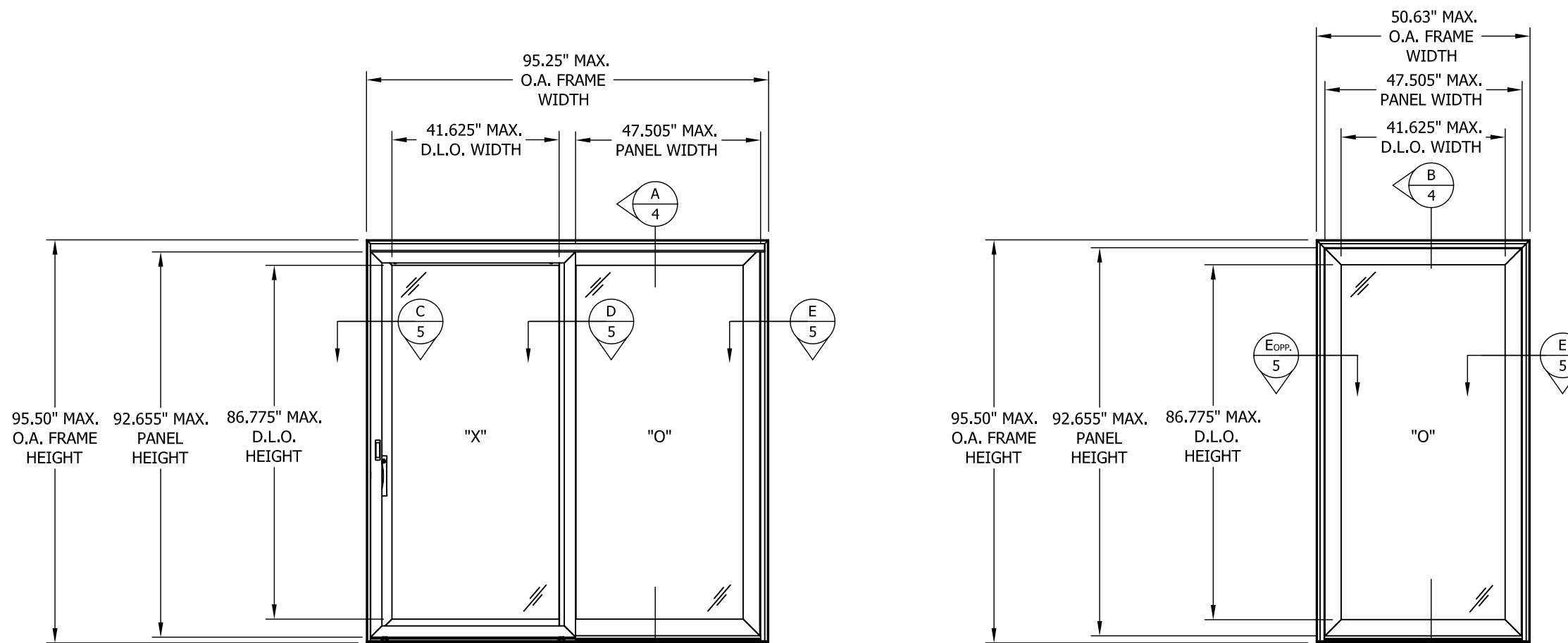
DWG. BY: OL CHK. BY: HFN

SCALE: NTS

DWG. #: PLA005

SHEET: OF 6

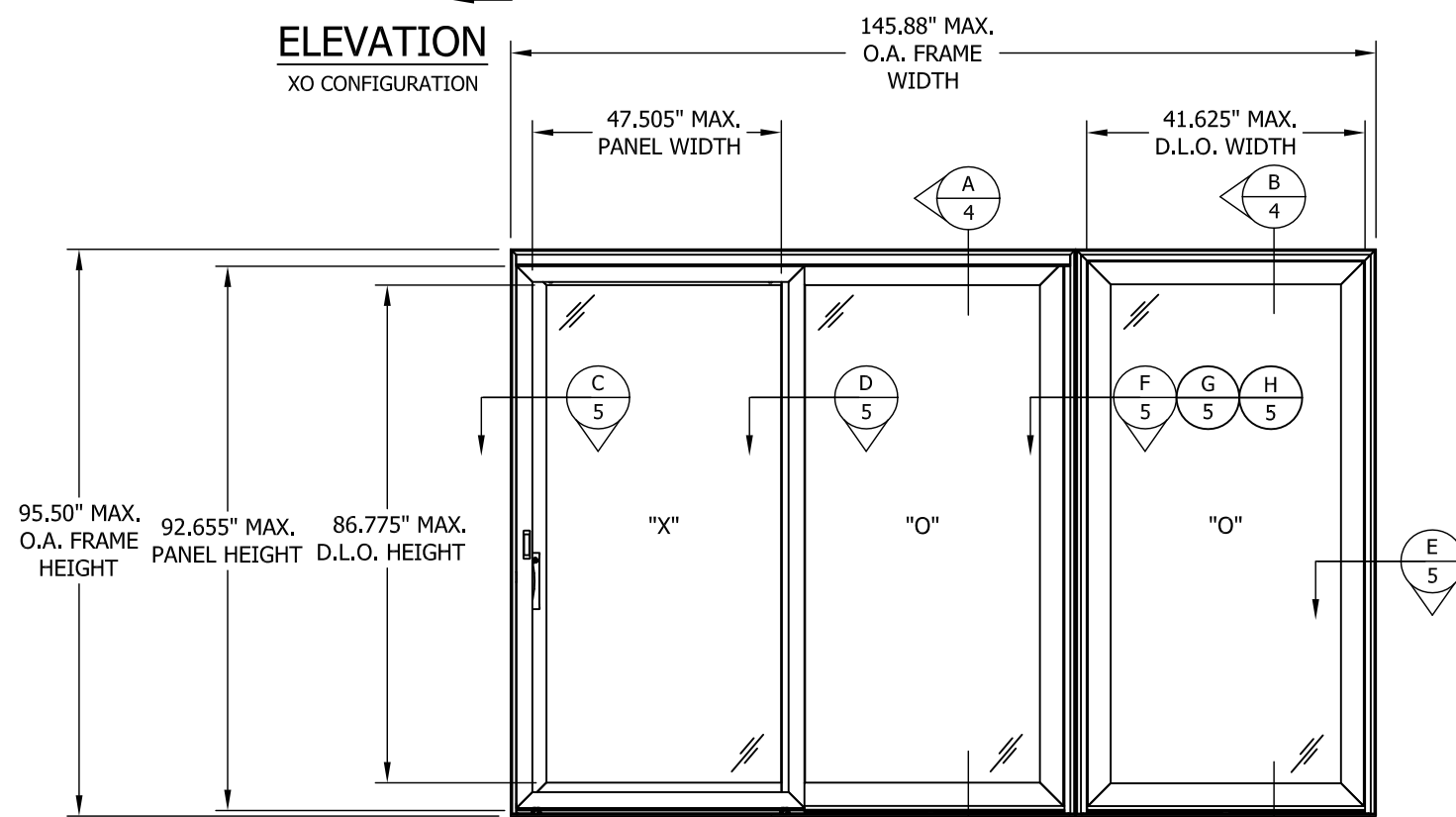
2



ELEVATION
XO CONFIGURATION

ELEVATION
O CONFIGURATION

APPROVED CONFIGURATION TABLE	
NUMBER OF PANELS	CONFIGURATIONS
1	O
2	XO, OX
3	O-XO, O-OX, XO-O & OX-O



ELEVATION
MULLED CONFIGURATION



102 MAIN ST.
PELLA, IA 50219
PH: (641) 621-6096

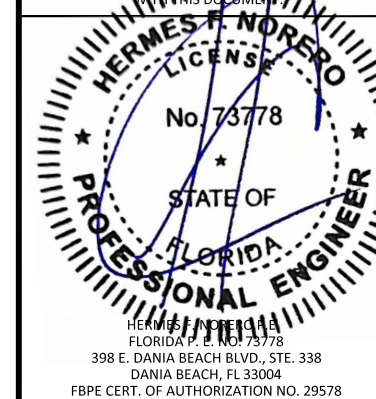
TITLE: IMPERVIA 2.0 SLIDING PATIO DOOR
(NON-HVHZ) (IMPACT)
ANCHOR LAYOUTS

PREPARED BY: BUILDING DROPS, INC.
398 E. DANIA BEACH BLVD., STE. 338
DANIA BEACH, FL 33004
PH: (954) 399-8478
FAX: (954) 744-4738
WEB: www.buildingdrops.com



REMARKS	BY	DATE

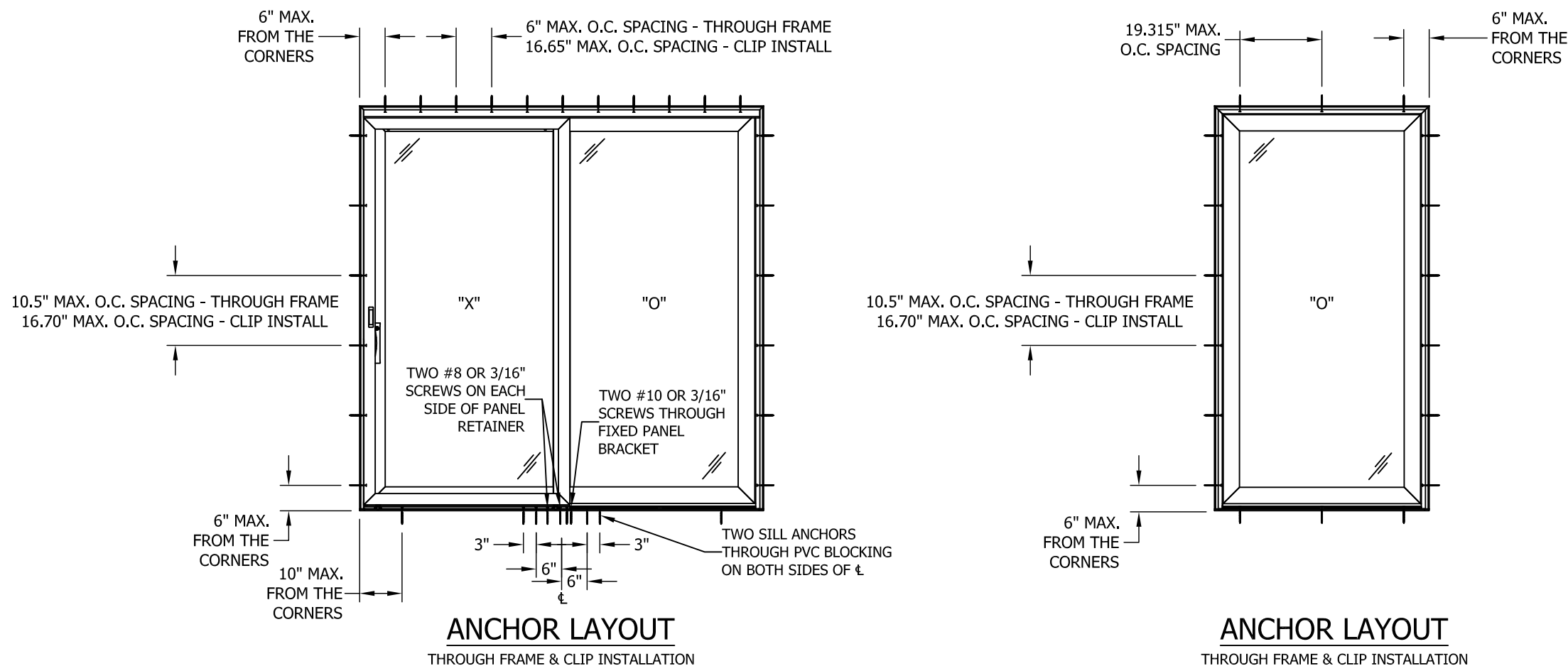
THE INSTALLATION DETAILS DESCRIBED HEREIN ARE GENERIC AND MAY NOT REFLECT ACTUAL CONDITIONS FOR A SPECIFIC SITE. IF SITE CONDITIONS CAUSE INSTALLATION TO DEVIATE FROM THE REQUIREMENTS DETAILED HEREIN, A LICENSED ENGINEER OR ARCHITECT SHALL PREPARE SITE SPECIFIC DOCUMENTS FOR USE IN THIS DOCUMENT.



FL39352

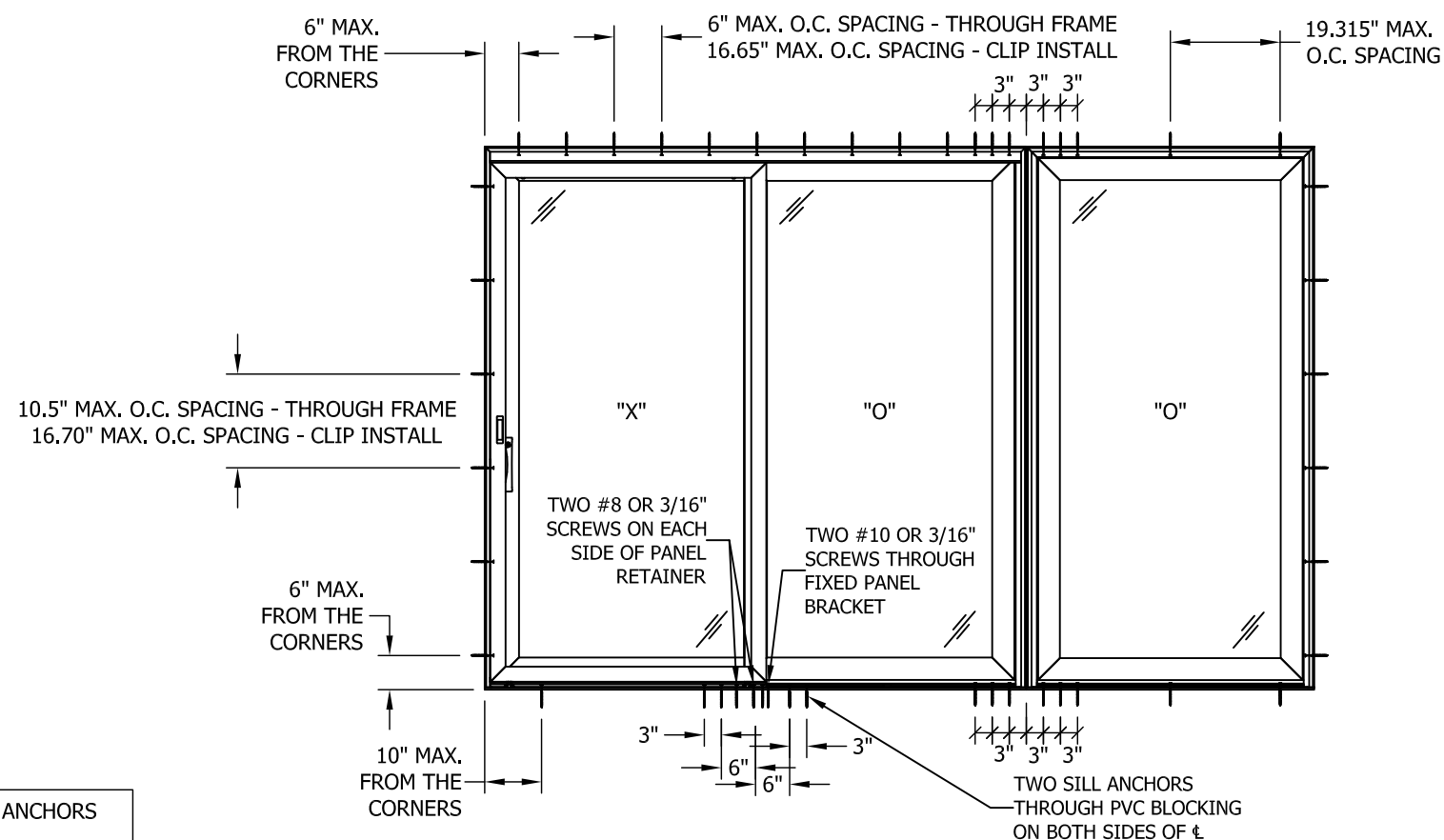
DATE: 06/30/23
DWG. BY: OL CHK. BY: HFN
SCALE: NTS
DWG. #: PLA005
SHEET: OF 6

3



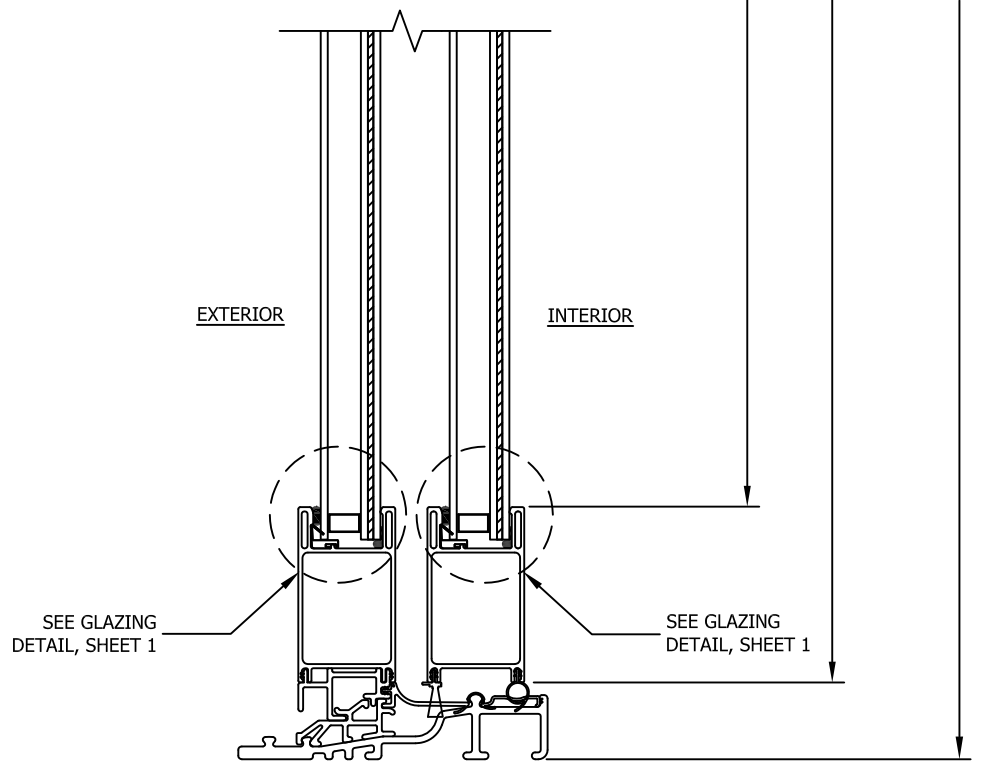
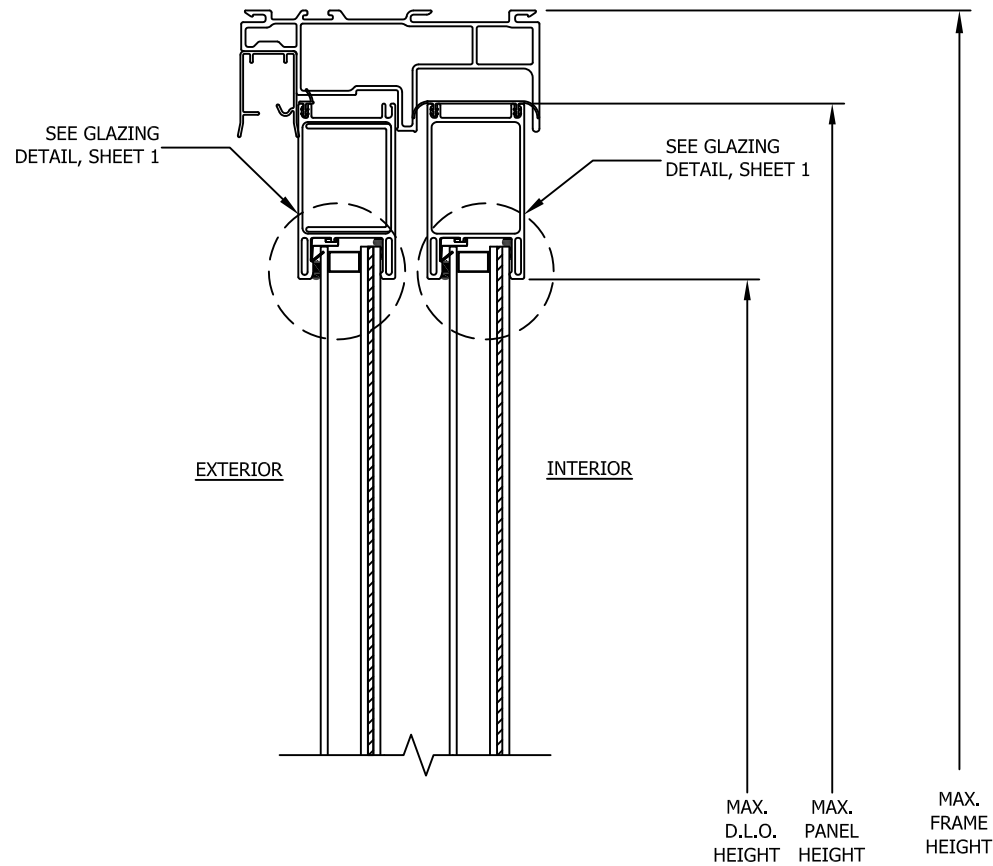
ANCHOR LAYOUT
THROUGH FRAME & CLIP INSTALLATION

ANCHOR LAYOUT
THROUGH FRAME & CLIP INSTALLATION



ANCHOR LAYOUT
THROUGH FRAME & CLIP INSTALLATION

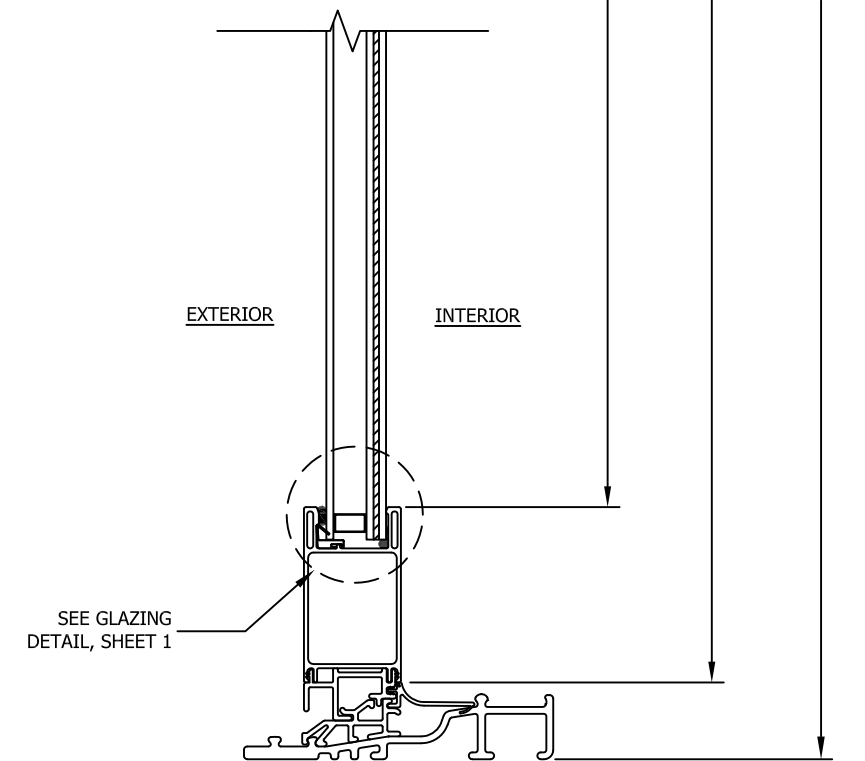
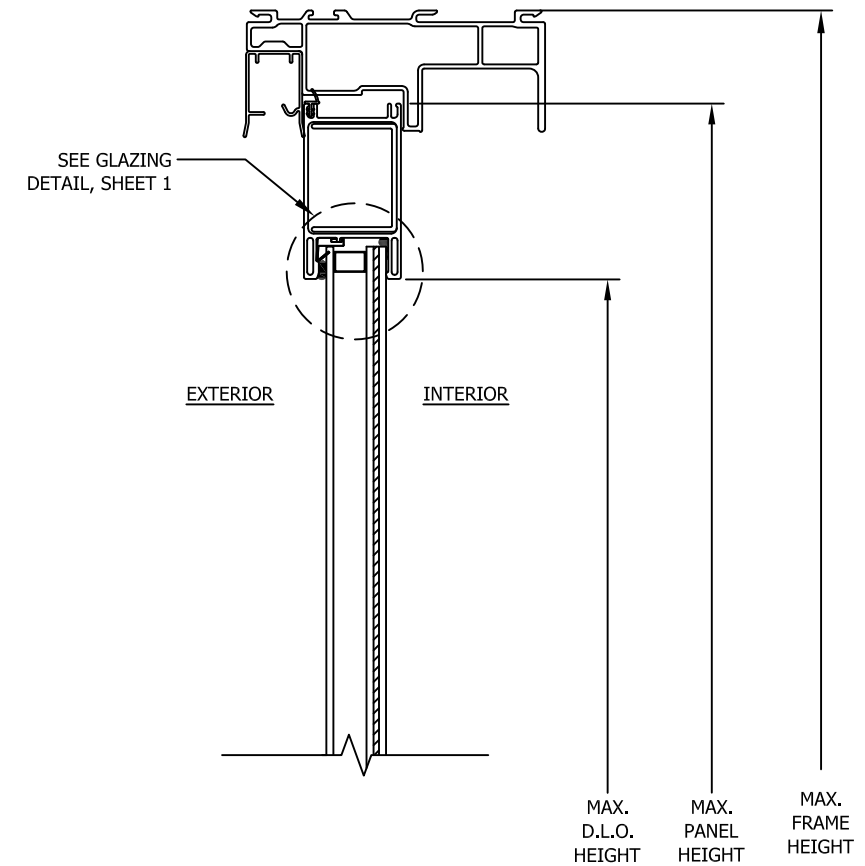
NOTE: TWO (2) INSTALLATION ANCHORS PER CLIP LOCATION.



A
4

VERTICAL SECTION

HEAD/SILL
SLIDING PATIO DOOR



B
4

VERTICAL SECTION

HEAD/SILL
FIXED SIDELITE



102 MAIN ST.
PELLA, IA 50219
PH: (641) 621-6096

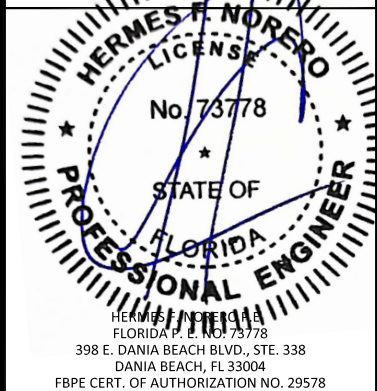
TITLE:
IMPERVIA 2.0 SLIDING PATIO DOOR
(NON-HVHZ) (IMPACT)
VERTICAL SECTIONS

PREPARED BY:
BD
BUILDING DROPS

BUILDING DROPS, INC.
398 E. DANIA BEACH BLVD., STE. 338
DANIA BEACH, FL 33004
PH: (954) 399-8478
FAX: (954) 744-4738
WEB: www.buildingdrops.com

REMARKS	BY	DATE

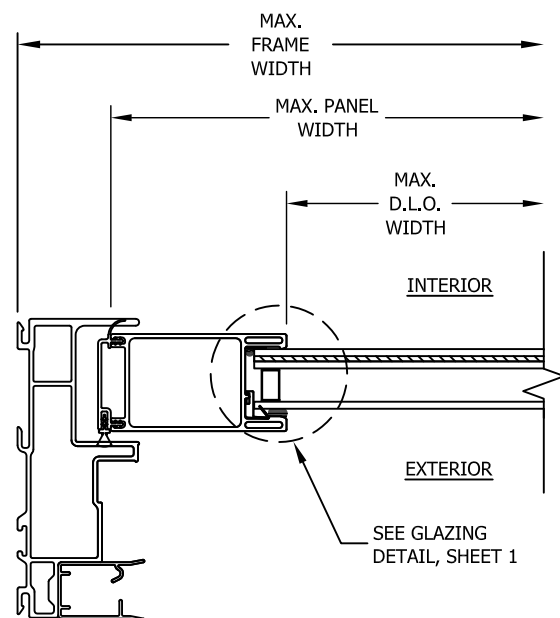
THE INSTALLATION DETAILS DESCRIBED HEREIN ARE GENERIC AND MAY NOT REFLECT ACTUAL CONDITIONS FOR A SPECIFIC SITE. IF SITE CONDITIONS CAUSE INSTALLATION TO DEVIATE FROM THE REQUIREMENTS DETAILED HEREIN, A LICENSED ENGINEER OR ARCHITECT SHALL PREPARE SITE SPECIFIC DOCUMENTS FOR USE IN THIS DOCUMENT.



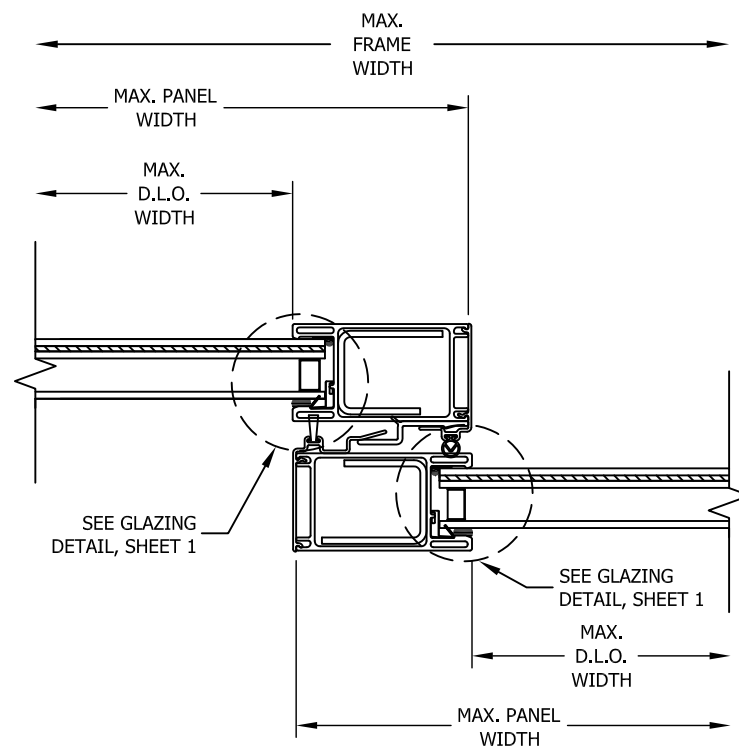
FL39352

DATE: 06/30/23
DWG. BY: OL CHK. BY: HFN
SCALE: NTS
DWG. #: PLA005
SHEET: OF 6

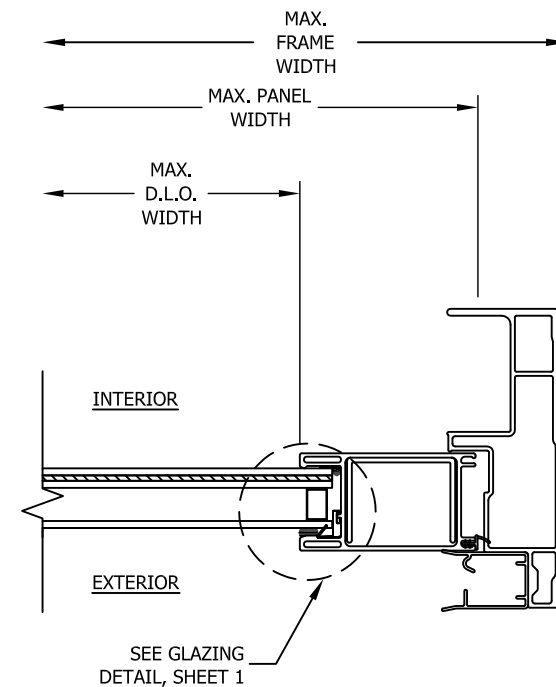
4



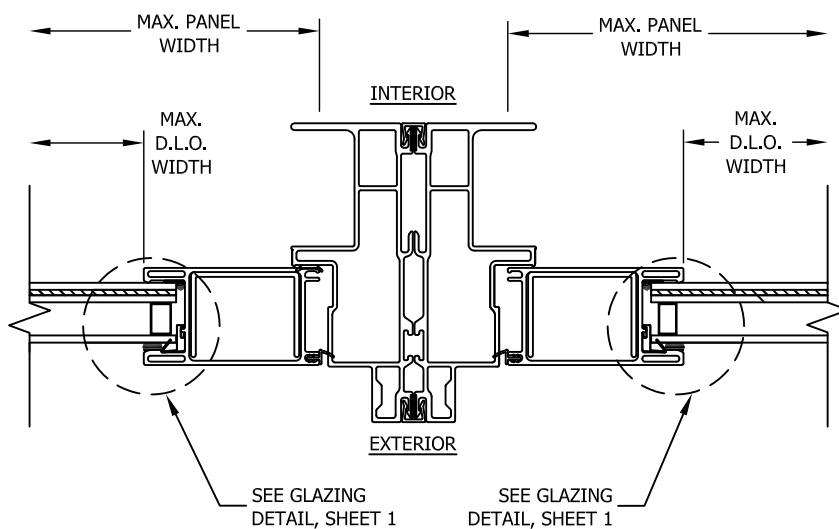
C
5 HORIZONTAL SECTION
OPERABLE JAMB



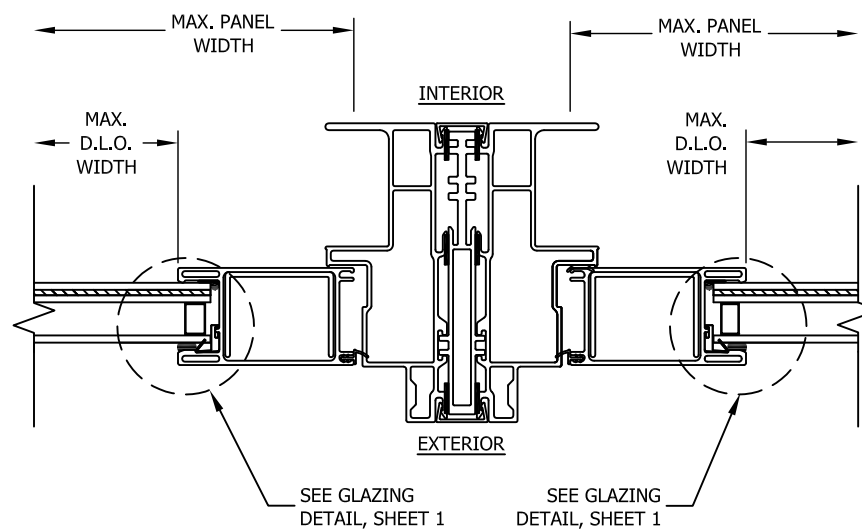
D
5 HORIZONTAL SECTION
INTERLOCK



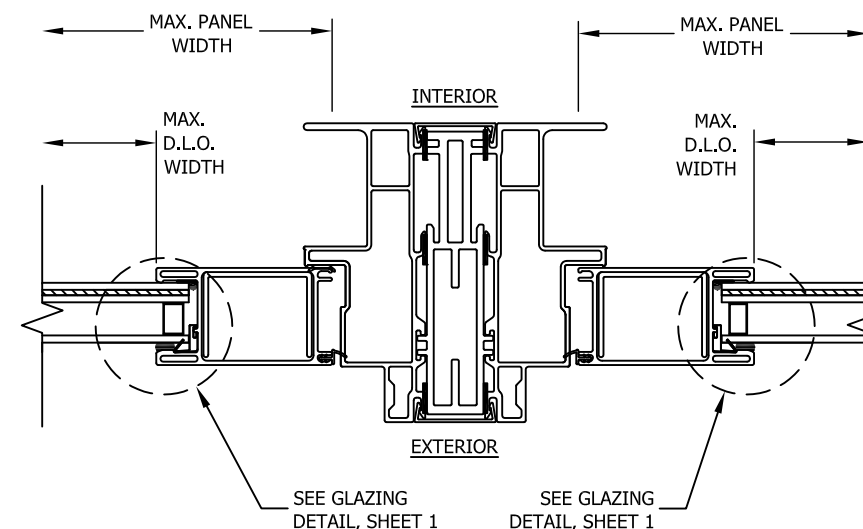
E
5 HORIZONTAL SECTION
FIXED JAMB



F
5 HORIZONTAL SECTION
TIGHT MULLION



G
5 HORIZONTAL SECTION
1/2" SPREAD MULLION



H
5 HORIZONTAL SECTION
1" SPREAD MULLION



102 MAIN ST.
PELLA, IA 50219
PH: (641) 621-6096

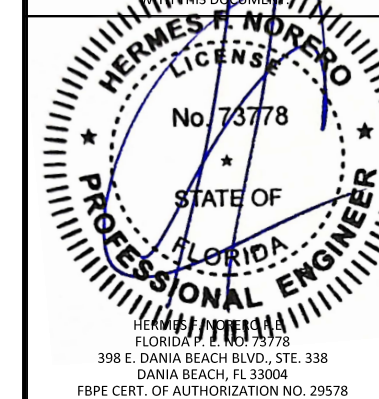
TITLE: IMPERVIA 2.0 SLIDING PATIO DOOR
(NON-HVHZ) (IMPACT)
HORIZONTAL SECTIONS

PREPARED BY: BUILDING DROPS, INC.
398 E. DANIA BEACH BLVD., STE. 338
DANIA BEACH, FL 33004
PH: (954) 399-8478
FAX: (954) 744-4738
WEB: www.buildingdrops.com



REMARKS	BY	DATE

THE INSTALLATION DETAILS DESCRIBED HEREIN ARE GENERIC AND MAY NOT REFLECT ACTUAL CONDITIONS FOR A SPECIFIC SITE. IF SITE CONDITIONS CAUSE INSTALLATION TO DEVIATE FROM THE REQUIREMENTS DETAILED HEREIN, A LICENSED ENGINEER OR ARCHITECT SHALL PREPARE SITE SPECIFIC DOCUMENTS FOR USE IN THIS DOCUMENT.



FL39352

DATE: 06/30/23

DWG. BY: OL CHK. BY: HFN

SCALE: NTS

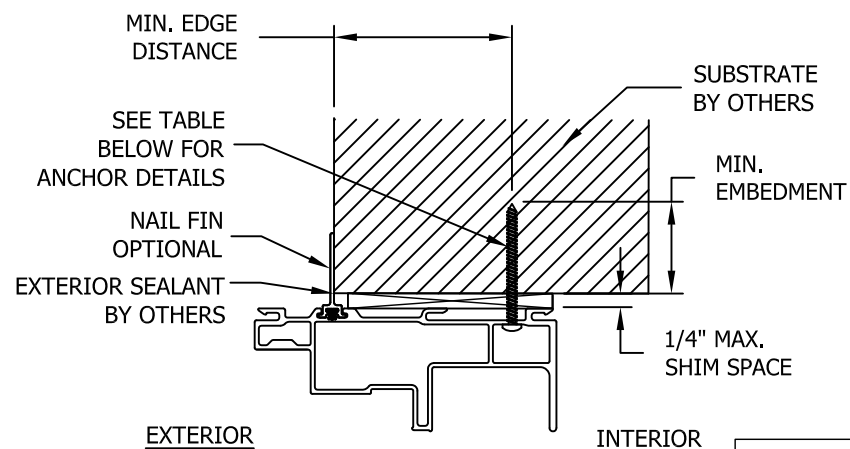
DWG. #: PLA005

SHEET: 5 OF 6

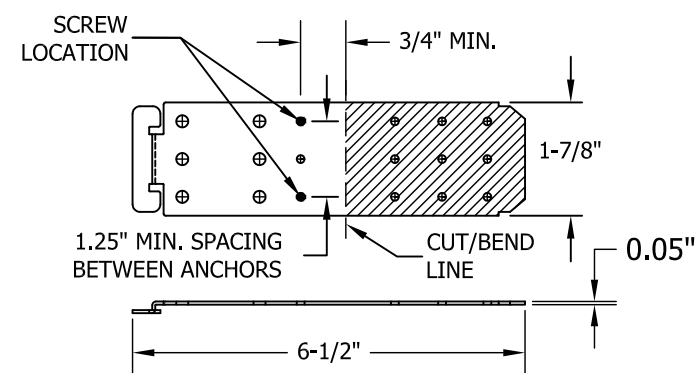
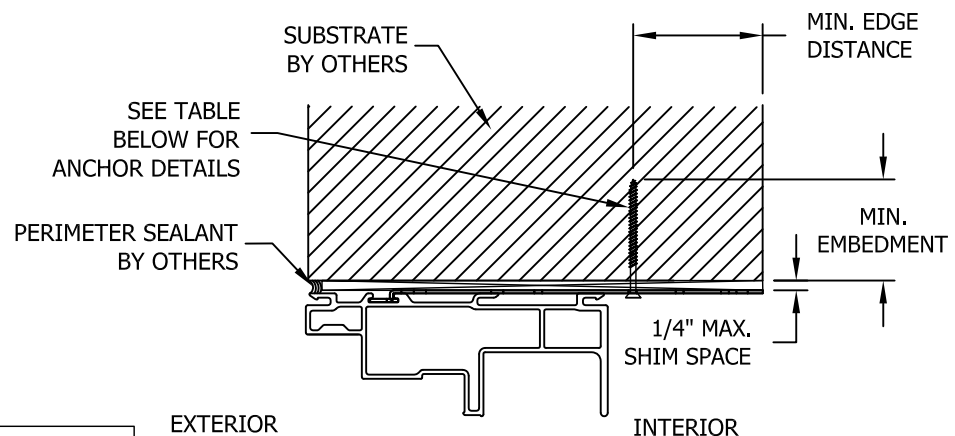
5



102 MAIN ST.
PELLA, IA 50219
PH: (641) 621-6096



NOTE: HEAD SHOWN, JAMB SIMILAR

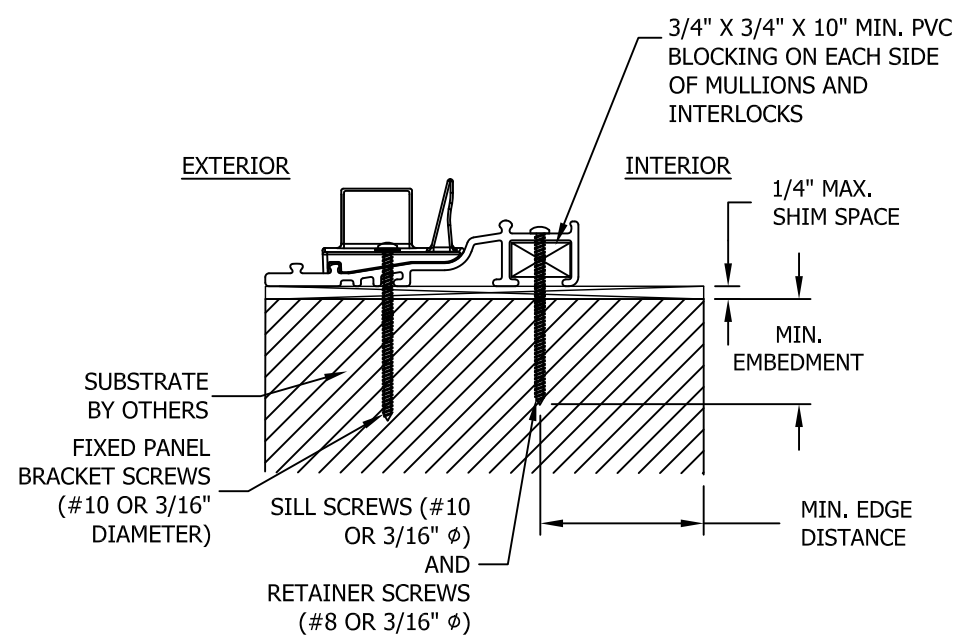


NOTE: EXCESS CLIP TAB MAY BE CUT OFF OR BENT OVER THE SUBSTRATE

A
6 ANCHOR DETAIL
THROUGH FRAME INSTALLATION (HEAD)

B
6 ANCHOR DETAIL
CLIP INSTALLATION (HEAD)

C
6 INSTALLATION CLIP
STEEL



D
6 ANCHOR DETAIL
THROUGH FRAME INSTALLATION (SILL)

ANCHOR SCHEDULE						
METHOD	SUBSTRATE TYPE	SUBSTRATE	ANCHOR TYPE	MIN. EMBEDMENT	MIN. EDGE DISTANCE	SPACING
THROUGH FRAME	A	WOOD: MIN. SG = 0.55	#10 WOOD SCREW	1.50"	0.75"	SEE SHEET 3
	B	METAL: 18 GAUGE STEEL, MIN. Fy = 33KSI ALUMINUM .125" MIN, 6063-T5 MIN	#10 SELF DRILLING SCREW	3 THREADS MIN. PENETRATION BEYOND METAL	0.50"	
	C	CONCRETE: f'c=3000PSI	3/16" ITW TAPCON	1.25"	2.00"	
	D	MASONRY: CMU PER ASTM C90 MIN. 2000 PSI		1.00"	2.00"	
CLIP INSTALLATION & SILL RETAINER SCREWS	A	WOOD: MIN. SG = 0.55	#8 WOOD SCREW	1.50"	0.75"	SEE SHEET 3
	B	METAL: 18 GAUGE STEEL, MIN. Fy = 33KSI ALUMINUM .125" MIN, 6063-T5 MIN	#8 SELF DRILLING SCREW	3 THREADS MIN. PENETRATION BEYOND METAL	0.50"	
	C	CONCRETE: f'c=3000PSI	3/16" ITW TAPCON	1.25"	2.00"	
	D	MASONRY: CMU PER ASTM C90 MIN. 2000 PSI		1.00"	2.00"	

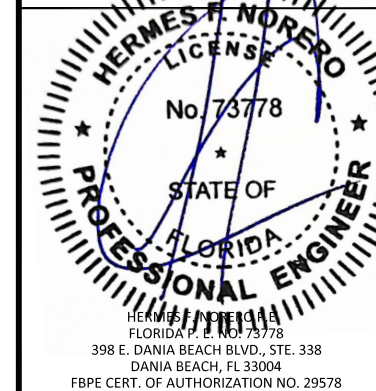
TITLE: IMPERVIA 2.0 SLIDING PATIO DOOR (NON-HVHZ) (IMPACT) ANCHOR DETAILS

PREPARED BY: BUILDING DROPS, INC.
398 E. DANIA BEACH BLVD., STE. 338
DANIA BEACH, FL 33004
PH: (954) 399-8478
FAX: (954) 744-4738
WEB: www.buildingdrops.com



REMARKS	BY	DATE

THE INSTALLATION DETAILS DESCRIBED HEREIN ARE GENERIC AND MAY NOT REFLECT ACTUAL CONDITIONS FOR A SPECIFIC SITE. IF SITE CONDITIONS CAUSE INSTALLATION TO DEVIATE FROM THE REQUIREMENTS DETAILED HEREIN, A LICENSED ENGINEER OR ARCHITECT SHALL PREPARE SITE SPECIFIC DOCUMENTS FOR USE.



FL39352

DATE: 06/30/23
DWG. BY: OL
CHK. BY: HFN
SCALE: NTS
DWG. #: PLA005
SHEET: OF 6